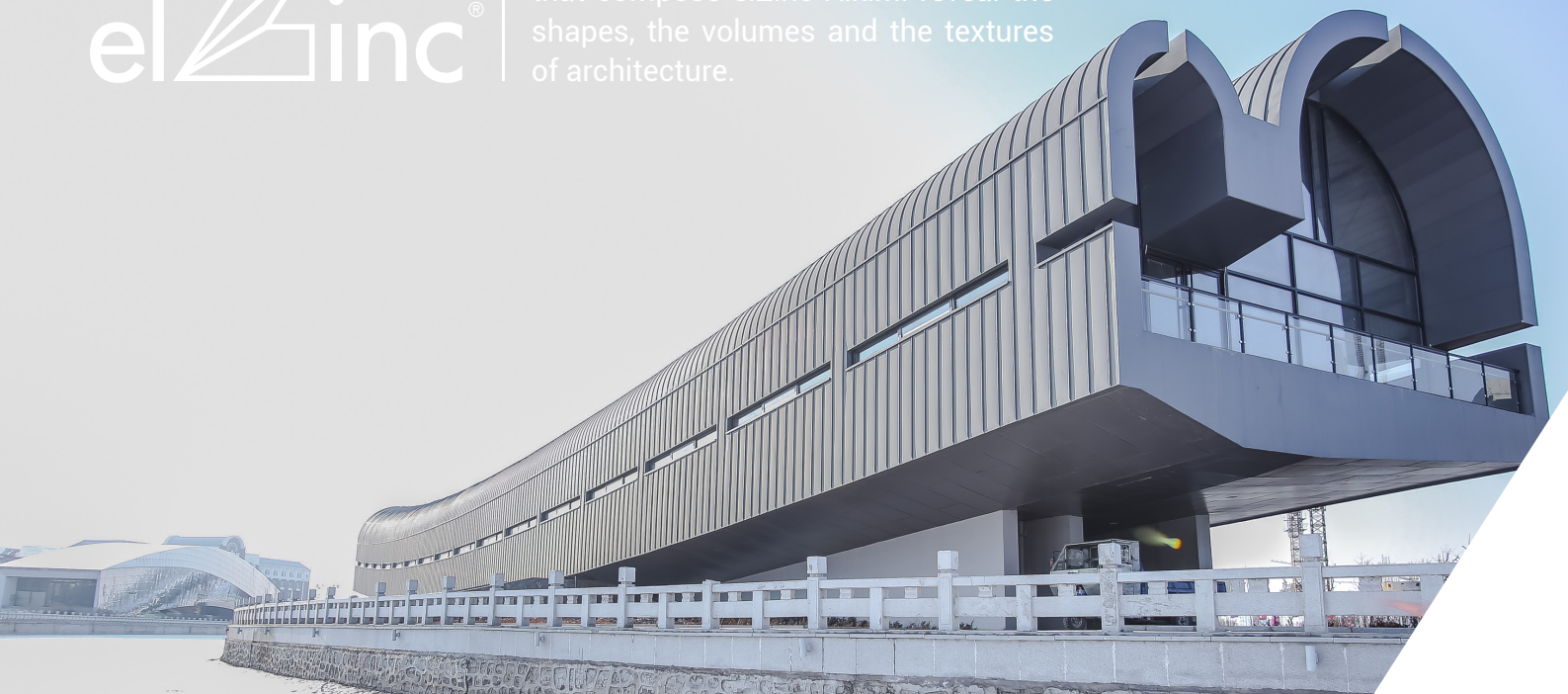




Used alone or combined, the shades that compose elZinc Alkimi reveal the shapes, the volumes and the textures of architecture.



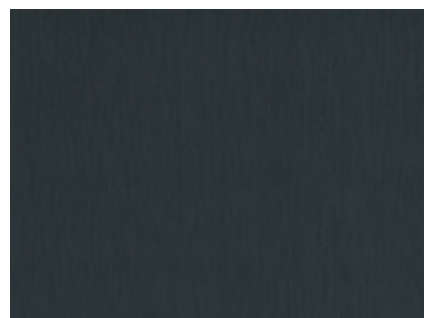
## elZinc Alkimi



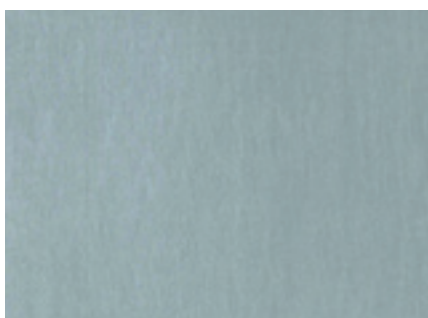
elZinc Natural®  
SRI 36



elZinc Slate®  
SRI 9



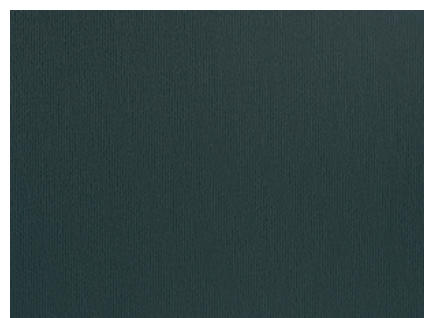
elZinc Graphite®  
SRI -6,5



elZinc Crystal®  
SRI 23



elZinc Lava®  
SRI Pending testing

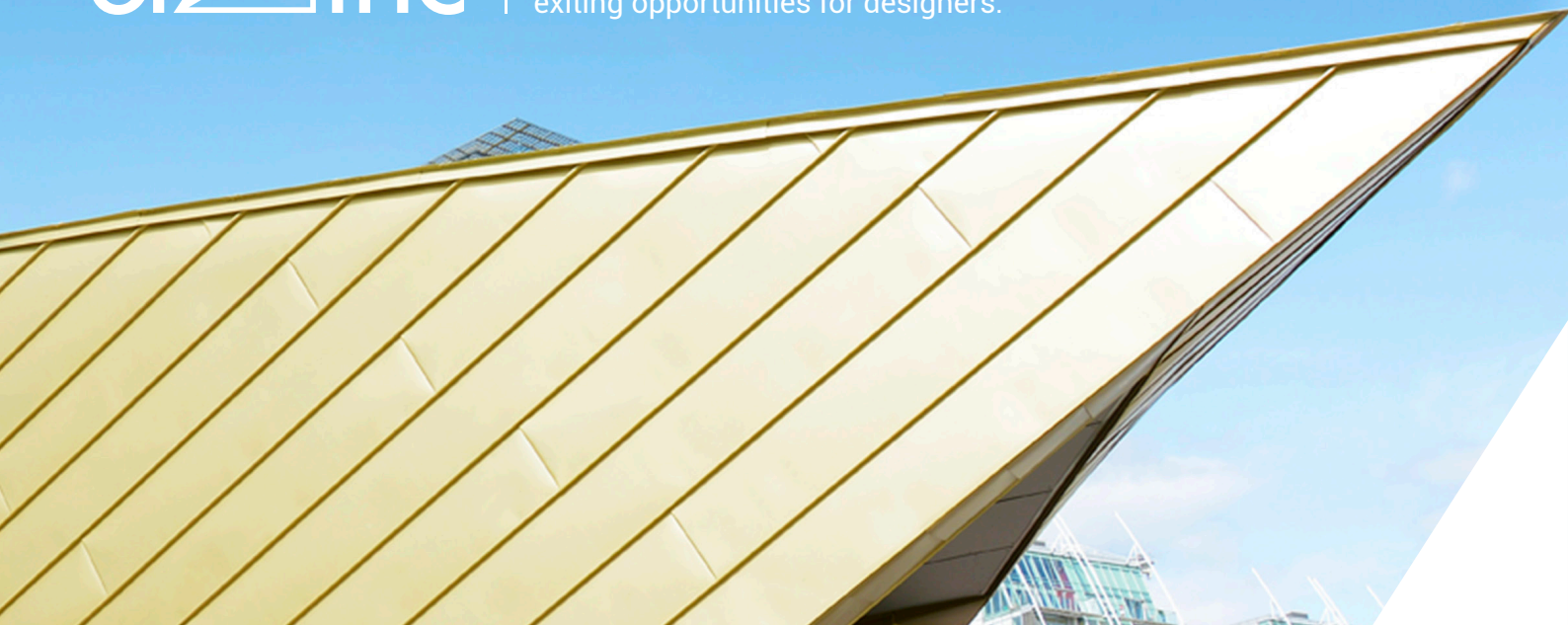


elZinc Oliva®  
SRI Pending testing

- In addition to the classic six shades of the elZinc Rainbow range, elZinc offers the possibility of creating custom finishes for your project.
- All of the colors shown are intended only to give an indication of the actual appearance.
- Solar Reflectance Index – SRI numbers, as defined by ASTM E1980 using 12 W/m<sup>2</sup>K values, indicate the material's reflectivity (how well it reflects back instead of absorbing radiant energy) and emissivity (how well it radiates absorbed heat back into the environment).



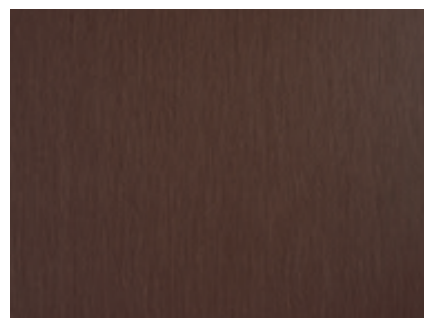
elZinc Rainbow® with its subtle, versatile shades are suitable for all types of architecture, opening up exiting opportunities for designers.



elZinc Rainbow® Green  
SRI 15,3



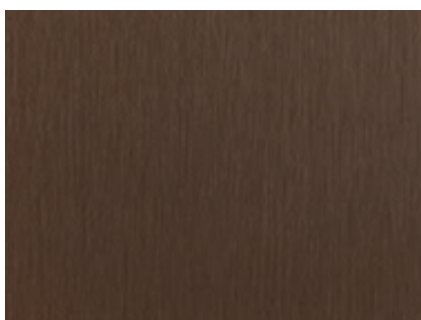
elZinc Rainbow® Gold  
SRI 46,5



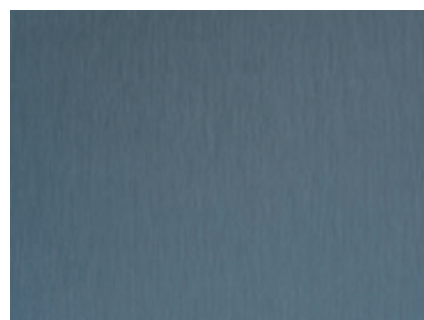
elZinc Rainbow® Red  
SRI 16,9



elZinc Rainbow® Ebony  
SRI Pending testing



elZinc Rainbow® Brown  
SRI Pending testing



elZinc Rainbow® Blue  
SRI 18,1

- In addition to the classic six shades of the elZinc Rainbow range, elZinc offers the possibility of creating custom finishes for your project.
- All of the colors shown are intended only to give an indication of the actual appearance.
- Solar Reflectance Index – SRI numbers, as defined by ASTM E1980 using 12 W/m<sup>2</sup>K values, indicate the material's reflectivity (how well it reflects back instead of absorbing radiant energy) and emissivity (how well it radiates absorbed heat back into the environment).